

# EXPOsure Nook Package



The exhibit floor features twelve facility "column trees" which provide opportunity for 15'x15' sponsored lounges.

The standard lounge package is \$1,200 and includes:

- (1) 30" tall Pedestal Table
- (4) Standard Side Chair
- 15'x15' Carpet

Order deadline February 27, 2026

Furniture upgrades are available and listed below

## BRANDING OPPORTUNITIES

(Optional Upgrades)

Overhead Clings, Four per Station:  
144"w X 30"h, \$1300 each

Column Wraps, Four per station:  
126"w X 143"h, \$1300 each

## FURNISHING UPGRADES



Standard Armchair  
\$126.15 each



Standard 42" h  
Pedestal Table  
\$348 each



Geo End Table  
\$568.90 each



Bowery Chair  
\$853.30 each



Natural Feel Chair  
\$232.80 each



Natural Feel  
Pedestal Table  
\$496.05 each



Alondra End Table  
\$539.25 each



Marche Swivel  
Ottoman  
\$313.20 each



Standard 30" h  
Pedestal Table  
\$348 each



Adelaide Cocktail  
Table  
\$488.60 each



Century Chair  
\$869.55 each



Natural Feel 30"  
Table  
\$475.80 each



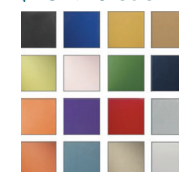
Geo Cocktail Table  
\$653.90 each



La Brea Chair  
\$917.05 each



Vibe Cube  
Ottoman  
\$234.90 each



Standard Stool  
\$233.80 each



Alondra Cocktail  
Table  
\$747.20 each



Lorna Chair  
\$870 each